



# WEWOOD

PORTUGUESE JOINERY



**RETAIL RECOMENDED PRICE LIST 2020**

ENGLISH / EURO, EXCL. VAT

V.04.2020





# INDEX

ACCESSORIES p. 2

**CANCAN** p. 2

**LUNA** p. 2

**SIXTY'S** p. 2

BOOKSHELVES p. 3

**XI** p. 3

**X2** p. 3

**FLOAT** p. 3

DESKS p. 4

**METIS** p. 4

**CONCIERGE** p. 4

**SECRETA** p. 4

**BRIDGE** p. 4

SEATS pp. 5 - 8

**PENSIL** p. 5

**CARAVELA** p. 5

**PALA** p. 6

**ORCA** p. 6

**KUNDERA** p. 6

**TREE** p. 6

**ODHIN** p. 6

**MULTIBANQUETA** p. 6

**SARTOR** p. 7

**KOBE** p. 7

**RABELO** p. 8

**SCAFFOLD** p. 8

**BOWIE** p. 8

TABLES pp. 9 - 10

**RAIA** p. 9

**SOMA** p. 9

**NURIA** p. 9

**INÊS** p. 9

**MARIA** p. 9

**VASCO** p. 9

**HEXA** p. 10

**MEMÓRIA** p. 10

**CORNER** p. 10

**SIDE BY SIDE** p. 10

**LAGO** p. 10

SIDEBOARDS pp. 11 -12

**CASANOVA** p. 11

**SCARPA** p. 11

**CAROUSEL** p. 11

**RADIO** p. 11

**PANAMÁ** p. 12

**GERÊS** p. 12

**MISTER** p. 12

**CONTADOR** p. 12

**TOUCH** p. 12

CONTRACT pp. 14 -16

**COUNTRY** p. 14

**ERICEIRA** p. 14

**CODFISH** p. 14

**CASINO** p. 15

**BISTRÔ** p. 15

**NUDA** p. 15

**GAZETA** p. 16

**HIDE & SEEK** p. 16

**LUGGAGE** p. 16

## ACCESSORIES



### CANCAN COAT STAND ●●

MADE OF FOUR PIECES IN SOLID WOOD TIED WITH LEATHER ROPE. THE CUT ON THE EDGE OF EACH POLE ALLOWS TO SAFELY HANG COATS.

DESIGNER STUDIO GUD

#### REFERENCES

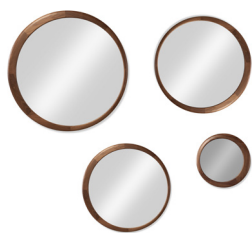
**CB.GU001C** OAK  
**CB.GU001N** WALNUT

#### DIMENSIONS

W 450 H 1700 D 450MM | 0.34m<sup>3</sup>

#### PRICE

880€  
1098€



### LUNA MIRRORS ●●

FOUR DIFFERENT SIZED MIRRORS. WOODEN FRAME IN OAK OR WALNUT. MIRROR OPTION ALSO IN SMOKE OR BRONZE.

DESIGNER ELEONORA FEDI

#### REFERENCES

**ED.EF001C** Ø 1200 OAK | 0.15m<sup>3</sup>  
**ED.EF004C** Ø 900 OAK | 0.11m<sup>3</sup>  
**ED.EF002C** Ø 600 OAK | 0.07m<sup>3</sup>  
**ED.EF003C** Ø 450 OAK | 0.05m<sup>3</sup>  
**ED.EF001N** Ø 1200 WALNUT (BRONZE MIRROR) | 0.15m<sup>3</sup>  
**ED.EF004N** Ø 900 WALNUT (BRONZE MIRROR) | 0.11m<sup>3</sup>  
**ED.EF002N** Ø 600 WALNUT (BRONZE MIRROR) | 0.07m<sup>3</sup>  
**ED.EF003N** Ø 450 WALNUT (BRONZE MIRROR) | 0.05m<sup>3</sup>

#### PRICE

980€  
800€  
675€  
520€  
1270€  
1150€  
870€  
700€



### SIXTY'S MIRRORS ●●

SIXTY'S IS AN UNIQUE MIRROR, DESIGNED TO CONTRAST. ALL IN WOOD, IT'S THE PERFECT PIECE FOR ANY ROOM, VERTICAL OR HORIZONTALLY.

DESIGNER WEWOOD DESIGN CENTER

#### REFERENCES

**ED.WW001C** 700 OAK  
**ED.WW002C** 1150 OAK  
**ED.WW003C** 1800 OAK  
**ED.WW001N** 700 WALNUT (BRONZE MIRROR)  
**ED.WW002N** 1150 WALNUT (BRONZE MIRROR)  
**ED.WW003N** 1800 WALNUT (BRONZE MIRROR)

#### PRICE

916€  
1140€  
1300€  
1160€  
1250€  
1450€

#### DIMENSIONS

W 700 H 700 D 50MM | 0.25m<sup>3</sup>  
W 655 H 1150 D 50MM | 0.37m<sup>3</sup>  
W 700 H 1800 D 50MM | 0.63m<sup>3</sup>



## BOOKSHELVES


**XI BOOKSHELF** ●●

SHELF WITH A STRUCTURE IN NATURAL WOOD VENEERED MDF, OAK OR WALNUT. ASSEMBLED WITHOUT TOOLS LIKE A WOODEN GAME USING THE CARVED INSTRUCTIONS.

DESIGNER GONALO CAMPOS

## REFERENCES

**ET.GC001C** OAK  
**ET.GC001N** WALNUT

## DIMENSIONS

W 1200 H 2230 D 433MM | 1.16m<sup>3</sup>

## PRICE

1460€

1660€


**X2 SMART SHELF** ●●

SMART SHELF IN SOLID WOOD, FULLY CUSTOMIZABLE. ALLOWS TO INCREASE THE WIDTH AND HEIGHT ANYTIME AND CREATING SO NEW COMPARTMENTS TO STORAGE ANY ITEMS.

DESIGNER LAURINDO MARTA

## REFERENCES

**ET.LM001C** OAK  
**ET.LM001N** WALNUT

## DIMENSIONS

W 1500 H 2220 D 300MM | 1m<sup>3</sup>

## PRICE

2310€

2930€


**FLOAT BOOKSHELF** ●●

MODULAR SHELF WITH A RANGE OF COMBINATIONS, WITH OR WITHOUT CABINETS. CAN BE USED AS A SINGLE BOOKCASE OR AS A SEQUENCE OF MODULES TO FORM A LARGER BOOKSHELF OR A FREE-STANDING ROOM DIVIDER.

DESIGNER AURÉLIE BARBRY STUDIO

## REFERENCES

**ET.BS001C** OAK BIG  
**ET.BS001N** WALNUT BIG (BRONZE MIRROR)  
**ET.BS002C** OAK + CABINET BIG  
**ET.BS002N** WALNUT + CABINET BIG (BRONZE MIRROR)  
**ET.BS003C** OAK SMALL  
**ET.BS003N** WALNUT SMALL (BRONZE MIRROR)  
**ET.BS004C** OAK + CABINET SMALL  
**ET.BS004N** WALNUT + CABINET SMALL (BRONZE MIRROR)

## DIMENSIONS

**STRUCTURE**

W 1160 H 2170 D 440MM | 0.93m<sup>3</sup>  
W 671,5 H 2170 D 440MM | 0.64m<sup>3</sup>

**CABINET**

W 975 H 676,5 D 440MM | 0.24m<sup>3</sup>  
W 486,5 H 676,5 D 440MM | 0.24m<sup>3</sup>

## PRICE

1870€

2285€

2330€

2888€

1722€

1916€

2175€

2384€

## DESKS



### METIS DESK ●●●

COMPACT DESK MADE OF SOLID WOOD, OFFERING A REAL STORAGE SOLUTION WITH THREE DRAWERS, ONE SECRET COMPARTMENT AND TWO LIDDED SECTIONS.

DESIGNER GONALO CAMPOS

#### REFERENCES

**SC.GC001C** OAK  
**SC.GC001N** WALNUT

#### DIMENSIONS

W 1400 H 750 D 760MM | 0.80m<sup>3</sup>

#### PRICE

4600€  
5450€



### CONCIERGE CONSOLE / DESK

MINIMALIST CONSOLE CRAFTED FROM SOLID OAK WITH SOME WALNUT DETAILS, IT IS A PERFECT MARRIAGE OF TIMBER AND POWDED COATED STEEL ELEMENTS. CAN ALSO BE USED AS A DESK.

DESIGNER ANTONIO GARDONI & FEDERICO CASTELLI

#### REFERENCE

**SC.AF001C**

#### DIMENSIONS

W 1240 H 780 D 420MM | 0.41m<sup>3</sup>

#### PRICE

2390€



### SECRETA DESK ●●●

COMPACT AND FRIENDLY EXTENDABLE DESK. AT FIRST GLANCE, IT APPEARS AS A CONSOLE TABLE. IT OFFERS SEVERAL STORAGE COMPARTMENTS, A CABLE MANAGEMENT SOLUTION, AND TWO SURFACES AT DIFFERENT LEVELS.

DESIGNER JC BERLIN

#### REFERENCES

**SC.JC001C** OAK  
**SC.JC001N** WALNUT

#### DIMENSIONS

W 1100 H 890 D 500MM | 0.49m<sup>3</sup>

#### PRICE

1800€  
2200€



### BRIDGE DESK ●●●

ROUNDED SURFACES AND AN OVERALL MINIMALIST AESTHETIC DESK MADE FROM OAK OR WALNUT WITH METAL ARCS THAT SPAN THE LEGS.

DESIGNER CHRISTOPHE DE SOUSA

#### REFERENCES

**SC.CS001C** OAK  
**SC.CS001N** WALNUT

#### DIMENSIONS

W 1200 H 740 D 700MM | 0.62m<sup>3</sup>

#### PRICE

2490€  
3250€

## SEATS


**PENSIL CHAIR** ●●

CHAIR WITH A SCULPTURED WOODEN STRUCTURE, CREATED BY USING TRADITIONAL TECHNIQUES OF WOODWORKING AND SOFT SEATING IN FABRIC OR HIGH-QUALITY LEATHER.

DESIGNER TOM KELLEY

## REFERENCES

**CD.TK001CTC** OAK CLIENT FABRIC  
**CD.TK001C** OAK CLASSIC FABRIC  
**CD.TK001CP** OAK PREMIUM FABRIC  
**CD.TK001NTC** WALNUT CLIENT FABRIC  
**CD.TK001N** WALNUT CLASSIC FABRIC  
**CD.TK001NP** WALNUT PREMIUM FABRIC

## PRICE

464€  
 536€  
 634€  
 560€  
 628€  
 726€

## DIMENSIONS

W 495 H 800 D 528MM | 0.21m<sup>3</sup>


**PENSIL ARMCHAIR** ●●

CHAIR WITH A STRUCTURE IN SOLID WOOD AND UPHOLSTERED SEAT THAT CAN BE CUSTOMIZABLE.

DESIGNER TOM KELLEY

## REFERENCES

**CD.TK002CTC** OAK CLIENT FABRIC  
**CD.TK002C** OAK CLASSIC FABRIC  
**CD.TK002CP** OAK PREMIUM FABRIC  
**CD.TK002NTC** WALNUT CLIENT FABRIC  
**CD.TK002N** WALNUT CLASSIC FABRIC  
**CD.TK002NP** WALNUT PREMIUM FABRIC

## PRICE

516€  
 610€  
 708€  
 680€  
 780€  
 880€

## DIMENSIONS

W 625 H 810 D 516MM | 0.26m<sup>3</sup>


**PENSIL LOUNGE CHAIR** ●●

STUNNING LOUNGE CHAIR WITH A SOLID WOOD STRUCTURE. THE FABRICS CAN BE CUSTOMIZED.

DESIGNER TOM KELLEY

## REFERENCES

**CD.TK003CTC** OAK CLIENT FABRIC  
**CD.TK003C** OAK CLASSIC FABRIC  
**CD.TK003CP** OAK PREMIUM FABRIC  
**CD.TK003NTC** WALNUT CLIENT FABRIC  
**CD.TK003N** WALNUT CLASSIC FABRIC  
**CD.TK003NP** WALNUT PREMIUM FABRIC

## PRICE

660€  
 785€  
 898€  
 785€  
 900€  
 1013€

## DIMENSIONS

W 710 H 755 D 630MM | 0.34m<sup>3</sup>


**CARAVELA CHAIR** ●●

ROBUST AND ELEGANT CHAIR FULLY UPHOLSTERED WITH GREAT COMFORT.

DESIGNER GONALO CAMPOS

## REFERENCES

**CD.GC001CTC** OAK CLIENT FABRIC  
**CD.GC001C** OAK CLASSIC FABRIC  
**CD.GC001CP** OAK PREMIUM FABRIC  
**CD.GC001NTC** WALNUT CLIENT FABRIC  
**CD.GC001N** WALNUT CLASSIC FABRIC  
**CD.GC001NP** WALNUT PREMIUM FABRIC

## PRICE

424€  
 495€  
 570€  
 520€  
 590€  
 665€

## DIMENSIONS

W 540 H 800 D 610MM | 0.25m<sup>3</sup>


**CARAVELA BAR STOOL** ●●

FULLY UPHOLSTERED STOOL WITH GREAT COMFORT. PART OF A FAMILY OF CHAIRS.

DESIGNER GONALO CAMPOS

## REFERENCES

**CD.GC002CTC** OAK CLIENT FABRIC  
**CD.GC002C** OAK CLASSIC FABRIC  
**CD.GC002CP** OAK PREMIUM FABRIC  
**CD.GC002NTC** WALNUT CLIENT FABRIC  
**CD.GC002N** WALNUT CLASSIC FABRIC  
**CD.GC002NP** WALNUT PREMIUM FABRIC

## PRICE

480€  
 550€  
 625€  
 635€  
 695€  
 770€

## DIMENSIONS

W 465 H 1000 D 570MM | 0.26m<sup>3</sup>


**CARAVELA LOUNGE CHAIR** ●●

COMFORTABLE LOUNGE CHAIR WITH LEGS IN SOLID WOOD. THE FABRIC CAN BE CUSTOMIZED

DESIGNER GONALO CAMPOS

## REFERENCES

**CD.GC003CTC** OAK CLIENT FABRIC  
**CD.GC003C** OAK CLASSIC FABRIC  
**CD.GC003CP** OAK PREMIUM FABRIC  
**CD.GC003NTC** WALNUT CLIENT FABRIC  
**CD.GC003N** WALNUT CLASSIC FABRIC  
**CD.GC003NP** WALNUT PREMIUM FABRIC

## PRICE

620€  
 820€  
 970€  
 690€  
 890€  
 1040€

## DIMENSIONS

W 560 H 760 D 700MM | 0.31m<sup>3</sup>



## SEATS

### PALA CHAIR ●●



PRACTICAL AND COMFORTABLE CHAIR WITH ENVELOPING ELBOW REST AND UPHOLSTERED SEAT PAD

DESIGNER RAMOS & BASSOLS

#### REFERENCES

**CD.RB001CTC** OAK CLIENT FABRIC  
**CD.RB001C** OAK CLASSIC FABRIC  
**CD.RB001CP** OAK PREMIUM FABRIC  
**CD.RB001NTC** WALNUT CLIENT FABRIC  
**CD.RB001N** WALNUT CLASSIC FABRIC  
**CD.RB001NP** WALNUT PREMIUM FABRIC

#### PRICE

580€  
 680€  
 755€  
 780€  
 880€  
 955€

#### DIMENSIONS

W 570 H 760 D 510MM | 0.22m<sup>3</sup>

### ORCA CHAIR ●●



STRONG AND LIGHT CHAIR, AVAILABLE IN OAK OR WALNUT AND WITH UPHOLSTERED SEAT PAD. ASSEMBLED WITH NO SCREWS OR METAL FITTINGS.

DESIGNER STUDIO GUD

#### REFERENCES

**CD.GU001C** OAK  
**CD.GU001CP** OAK/LEATHER  
**CD.GU001N** WALNUT  
**CD.GU001NP** WALNUT/LEATHER

#### PRICE

700€  
 820€  
 850€  
 970€

#### DIMENSIONS

W 450 H 780 D 550MM | 0.19m<sup>3</sup>



### KUNDERA ARMCHAIR ●●



SOLID WOOD CHAIR, AVAILABLE IN OAK OR WALNUT WITH UPHOLSTERED PADS FOR BACK AND SEAT.

DESIGNER STUDIO GUD

#### REFERENCES

**CD.GU002C** OAK  
**CD.GU002CP** OAK/LEATHER  
**CD.GU002N** WALNUT  
**CD.GU002NP** WALNUT/LEATHER

#### PRICE

740€  
 960€  
 970€  
 1190€

#### DIMENSIONS

W 539 H 760 D 525MM | 0.21m<sup>3</sup>



### TREE LOUNGE CHAIR ●●



LOUNGE CHAIR WITH A STRUCTURE IN SOLID WOOD. COMPOSED ALSO BY TWO UPHOLSTERED FOAM PILLOWS.

DESIGNER WEWOOD DESIGN CENTER

#### REFERENCES

**CD.WW002CTC** OAK CLIENT FABRIC  
**CD.WW002C** OAK CLASSIC FABRIC  
**CD.WW002CP** OAK PREMIUM FABRIC  
**CD.WW002NTC** WALNUT CLIENT FABRIC  
**CD.WW002N** WALNUT CLASSIC FABRIC  
**CD.WW002NP** WALNUT PREMIUM FABRIC

#### PRICE

1890€  
 2190€  
 2415€  
 2290€  
 2590€  
 2815€

#### DIMENSIONS

W 800 H 670 D 800MM | 0.43m<sup>3</sup>

### ODHIN LOUNGE CHAIR ●●



SOLID WOOD CHAIR WITH LEATHER STRIPES, ROBUST AND DELICATE, PERFECT FOR A WORKING OR DINING AREA. AVAILABLE IN OAK OR WALNUT.

DESIGNER STUDIO GUD

#### REFERENCES

**CD.GU003C** OAK  
**CD.GU003N** WALNUT

#### PRICE

1240€  
 1580€

#### DIMENSIONS

W 625 H 655 D 800MM | 0.33m<sup>3</sup>

### MULTIBANQUETA STOOL ●●



MULTIPURPOSE PIECE IN SOLID OAK OR WALNUT. A STOOL THAT HAS THE POSSIBILITY OF BECOMING AN ENDLESS BENCH, A SIDE OR COFFEE TABLE.

DESIGNER SURICATA DESIGN STUDIO

#### REFERENCES

**BC.SD102C** OAK  
**BC.SD102N** WALNUT

#### PRICE

480€  
 590€

#### DIMENSIONS

W 490 H 450 D 275MM | 0.06m<sup>3</sup>

## SEATS


**SARTOR CHAIR** ●●

SOLID, UNDERSTATED, COMFORTABLE AND UPHOLSTERED CHAIR.

DESIGNER GONÇALO CAMPOS

## REFERENCES

**CD.GC004CTC** OAK CLIENT FABRIC  
**CD.GC004C** OAK CLASSIC FABRIC  
**CD.GC004CP** OAK PREMIUM FABRIC  
**CD.GC004NTC** WALNUT CLIENT FABRIC  
**CD.GC004N** WALNUT CLASSIC FABRIC  
**CD.GC004NP** WALNUT PREMIUM FABRIC

## PRICE

600€  
 730€  
 873€  
 700€  
 810€  
 953€

## DIMENSIONS

W 530 H 830 D 550MM | 0.24m<sup>3</sup>


**SARTOR ARMCHAIR** ●●

ARMCHAIR WITH SOFT UPHOLSTERED SHAPE, BALANCED WITH PIPING ALONG THE CONTOUR, TO CREATE A DISTINCT HARMONY OF FORM.

DESIGNER GONÇALO CAMPOS

## REFERENCES

**CD.GC005CTC** OAK CLIENT FABRIC  
**CD.GC005C** OAK CLASSIC FABRIC  
**CD.GC005CP** OAK PREMIUM FABRIC  
**CD.GC005NTC** WALNUT CLIENT FABRIC  
**CD.GC005N** WALNUT CLASSIC FABRIC  
**CD.GC005NP** WALNUT PREMIUM FABRIC

## PRICE

640€  
 770€  
 920€  
 740€  
 850€  
 1000€

## DIMENSIONS

W 600 H 830 D 550MM | 0.27m<sup>3</sup>


**SARTOR LOUNGE CHAIR** ●●

VERSATILE UPHOLSTERED AND COMFORTABLE LOUNGE CHAIR WITH A STRUCTURE IN SOLID WOOD.

DESIGNER GONÇALO CAMPOS

## REFERENCES

**CD.GC006CTC** OAK CLIENT FABRIC  
**CD.GC006C** OAK CLASSIC FABRIC  
**CD.GC006CP** OAK PREMIUM FABRIC  
**CD.GC006NTC** WALNUT CLIENT FABRIC  
**CD.GC006N** WALNUT CLASSIC FABRIC  
**CD.GC006NP** WALNUT PREMIUM FABRIC

## PRICE

720€  
 970€  
 1158€  
 790€  
 1040€  
 1228€

## DIMENSIONS

W 710 H 930 D 750MM | 0.50m<sup>3</sup>


**KOBE CHAIR** ●●

INTERCONNECTED CHAIR WITH A SOLID WOOD FRAME, ELEGANT, COMFORTABLE, STABLE AND ROBUST.

DESIGNER DANIEL SOUSA

## REFERENCES

**CD.DS001CTC** OAK CLIENT FABRIC  
**CD.DS001C** OAK CLASSIC FABRIC  
**CD.DS001CP** OAK PREMIUM FABRIC  
**CD.DS001NTC** WALNUT CLIENT FABRIC  
**CD.DS001N** WALNUT CLASSIC FABRIC  
**CD.DS001NP** WALNUT PREMIUM FABRIC

## PRICE

760€  
 840€  
 920€  
 1080€  
 1160€  
 1240€

## DIMENSIONS

W 570 H 770 D 575MM | 0.25m<sup>3</sup>

## SEATS

### RABELO SOFA ●●



REMARKABLY SOFT AND COMFORTABLE SOFA THAT CAN FIT ANY OPEN-PLAN, HOSPITALITY SETTING OR HIGH-END PUBLIC AREA.

DESIGNER CHRISTOPHE DE SOUSA

#### REFERENCES

**SF.CS001NTC** 2 SEATS WALNUT CLIENT FABRIC  
**SF.CS001N** 2 SEATS WALNUT CLASSIC FABRIC  
**SF.CS001NP** 2 SEATS WALNUT PREMIUM FABRIC  
**SF.CS002NTC** 3 SEATS WALNUT CLIENT FABRIC  
**SF.CS002N** 3 SEATS WALNUT CLASSIC FABRIC  
**SF.CS002NP** 3 SEATS WALNUT PREMIUM FABRIC

#### PRICE

4300€  
5308€  
6610€  
5200€  
6250€  
7970€

2 SEATS: W 2200 H 870 D 1050 | 2.38M<sup>3</sup>  
3 SEATS: W 2600 H 870 D 1050 | 2.01M<sup>3</sup>

### SCAFFOLD SOFA ●●●



COMFORTABLE SOFA WITH SURROUNDING WOODEN FRAME IN SOLID WOOD. A SOFA, A BOOKSHELF AND ALSO A DIVIDER, PERFECT FOR AN EXCLUSIVE SPACE. THE PILLOWS EASILY COME OFF AND CAN BE REPLACED.

DESIGNER ANDRÉ TEOMAN STUDIO

#### REFERENCES

**SF.AT001CTC** OAK CLIENT FABRIC  
**SF.AT001C** OAK CLASSIC FABRIC  
**SF.AT001CP** OAK PREMIUM FABRIC  
**SF.AT001NTC** WALNUT CLIENT FABRIC  
**SF.AT001N** WALNUT CLASSIC FABRIC  
**SF.AT001NP** WALNUT PREMIUM FABRIC

#### PRICE

8345€  
9845€  
10970€  
10480€  
11980€  
13105€

#### DIMENSIONS

W 2600 H 756 D 1050MM | 2.06M<sup>3</sup>

### BOWIE SOFA ●●●



MODULAR SOFA WITH AN IRON AND WOOD STRUCTURE. THE MEMORY FOAM KEEPS THE SOFT AND CLEAN LINES OF THE SOFA, EVEN WITH INTENSE USE. ITS DIMENSIONS CAN VARY BETWEEN A SINGLE ARMCHAIR SEAT, TO A 3 SEAT WIDE SOFA.

DESIGNER GONÇALO CAMPOS

#### REFERENCES

**SF.GC003CTC** 3 SEATS OAK CLIENT FABRIC  
**SF.GC003C** 3 SEATS OAK CLASSIC FABRIC  
**SF.GC003CP** 3 SEATS OAK PREMIUM FABRIC  
**SF.GC003NTC** 3 SEATS WALNUT CLIENT FABRIC  
**SF.GC003N** 3 SEATS WALNUT CLASSIC FABRIC  
**SF.GC003NP** 3 SEATS WALNUT PREMIUM FABRIC  
**SF.GC002CTC** 2 SEATS OAK CLIENT FABRIC  
**SF.GC002C** 2 SEATS OAK CLASSIC FABRIC  
**SF.GC002CP** 2 SEATS OAK PREMIUM FABRIC  
**SF.GC002NTC** 2 SEATS WALNUT CLIENT FABRIC  
**SF.GC002N** 2 SEATS WALNUT CLASSIC FABRIC  
**SF.GC002NP** 2 SEATS WALNUT PREMIUM FABRIC  
**SF.GC001CTC** 1 SEAT OAK CLIENT FABRIC  
**SF.GC001C** 1 SEAT OAK CLASSIC FABRIC  
**SF.GC001CP** 1 SEAT OAK PREMIUM FABRIC  
**SF.GC001NTC** 1 SEAT WALNUT CLIENT FABRIC  
**SF.GC001N** 1 SEAT WALNUT CLASSIC FABRIC  
**SF.GC001NP** 1 SEAT WALNUT PREMIUM FABRIC  
**SF.GC000CTC** POUFF OAK CLIENT FABRIC  
**SF.GC000C** POUFF OAK CLASSIC FABRIC  
**SF.GC000CP** POUFF OAK PREMIUM FABRIC  
**SF.GC000NTC** POUFF WALNUT CLIENT FABRIC  
**SF.GC000N** POUFF WALNUT CLASSIC FABRIC  
**SF.GC000NP** POUFF WALNUT PREMIUM FABRIC

#### PRICE

5504€  
6554€  
7342€  
5504€  
6554€  
7342€  
4528€  
5378€  
6016€  
4528€  
5378€  
6016€  
2048€  
2598€  
3011€  
2048€  
2598€  
3011€  
790€  
950€  
1070€  
840€  
1000€  
1120€

#### DIMENSIONS

**3 SEATS** W 3005 H 750 D 900MM | 2.03M<sup>3</sup>  
**2 SEATS** W 2200 H 750 D 900MM | 1.48M<sup>3</sup>  
**1 SEATS** W 1130 H 750 D 900MM | 0.90M<sup>3</sup>  
**POUFF** W 900 H 420 D 900MM | 0.34M<sup>3</sup>



## TABLES


**RAIA TABLE** ●●

WOODEN LIGHT AND ELEGANT TABLE WITH FIXED TOP. AVAILABLE IN TWO DIFFERENT DIMENSIONS.

DESIGNER STUDIO GUD

## REFERENCES

**MJ.GU001C** OAK 1800  
**MJ.GU002C** OAK 2000  
**MJ.GU001N** WALNUT 1800  
**MJ.GU002N** WALNUT 2000

## PRICE

2820€  
 3080€  
 4110€  
 4420€

## DIMENSIONS

W 1800 H 750 D 950MM | 1.28m<sup>3</sup>  
 W 2000 H 750 D 1000MM | 1.50m<sup>3</sup>


**SOMA TABLE** ●●

SOLID WOOD DINING TABLE WITH ELEGANT WOOD JOINERY DETAILS THAT UNDERLINES THE PERSONALITY OF THE TABLE. AVAILABLE IN THREE DIFFERENT DIMENSIONS.

DESIGNER CRISTIAN HAAS

## REFERENCES

**MJ.CH001C** OAK 1800  
**MJ.CH002C** OAK 2400  
**MJ.CH003C** OAK 3000  
**MJ.CH001N** WALNUT 1800  
**MJ.CH002N** WALNUT 2400  
**MJ.CH003N** WALNUT 3000

## PRICE

2708€  
 3250€  
 3800€  
 4400€  
 4999€  
 5800€

## DIMENSIONS

W 1800 H 750 D 1000MM | 1.35m<sup>3</sup>  
 W 2400 H 750 D 1100MM | 1.98m<sup>3</sup>  
 W 3000 H 750 D 1200MM | 2.70m<sup>3</sup>


**NURIA EXTENDABLE TABLE** ●●

EXTENDABLE DINING TABLE WITH A SOLID CONSTRUCTION THAT EXPANDS FROM 6 TO 10 SEATING PLACES

DESIGNER GONALO CAMPOS

## REFERENCES

**MJ.GC015C** OAK  
**MJ.GC015N** WALNUT

## PRICE

3125€  
 3486€

## DIMENSIONS

W 1800 H 750 D 1000MM | 1.35m<sup>3</sup>  
 W 2400 H 750 D 1100MM | 1.80m<sup>3</sup>  
 W 3000 H 750 D 1200MM | 2.25m<sup>3</sup>


**INES TABLE** ●●

SOLID WOOD OVAL TABLE THAT ADAPTS TO DIFFERENT ENVIRONMENTS DUE TO ITS CONTEMPORARY DESIGN.

DESIGNER WEWOOD DESIGN CENTER

## REFERENCES

**MJ.WW005C** OAK  
**MJ.WW005N** WALNUT

## PRICE

2750€  
 3380€

## DIMENSIONS

W 2000 H 750 D 1000MM | 1.50m<sup>3</sup>


**MARIA TABLE** ●●

ROUND TABLE OF SCANDINAVIAN INSPIRATION WITH A FLUID AND LIGHTWEIGHT DESIGN.

DESIGNER WEWOOD DESIGN CENTER

## REFERENCES

**MJ.WW006C** OAK  
**MJ.WW006N** WALNUT

## PRICE

2550€  
 3300€

## DIMENSIONS

W 1200 H 750 D 1200MM | 1.08m<sup>3</sup>


**VASCO TABLE** ●●

ROUND TABLE WITH A STRUCTURE IN SOLID WOOD, SUPPORTED BY A CONICAL BASE, AND THREE OPTIONS FOR THE TOP: GLASS, MARBLE OR CERAMICS.

DESIGNER VARIAFORMA

## REFERENCES

**MJ.VF001CV** OAK GLASS (BRONZE)\*  
**MJ.VF001CC** OAK CERAMICS\*  
**MJ.VF001C** OAK STANDARD MARBLE\*  
**MJ.VF001CP** OAK PREMIUM MARBLE\*  
**MJ.VF001NV** WALNUT GLASS (BRONZE)  
**MJ.VF001NC** WALNUT CERAMICS  
**MJ.VF001N** WALNUT STANDARD MARBLE  
**MJ.VF001NP** WALNUT PREMIUM MARBLE

## PRICE

6070€  
 6365€  
 7148€  
 8000€  
 6980€  
 7320€  
 8220€  
 9200€

## DIMENSIONS

Ø1500 H 750MM | 1.69m<sup>3</sup>

## TABLES



### HEXA COFFEE /SIDE TABLE ●●

SOLID WOOD COFFEE/SIDE TABLE. IT CAN BE USED VERTICAL, HORIZONTALLY OR AS A MODULAR SYSTEM ALLOWING IT TO FILL INTO DIFFERENT SPACES OR COMBINE DIFFERENT WOODS.

DESIGNER DANIEL VIEIRA

#### REFERENCES

**MC.DV001C** OAK  
**MC.DV001N** WALNUT

#### DIMENSIONS

W 546 H 355 D 630MM | 0.12m<sup>3</sup>

#### PRICE

885€  
1050€



### MEMÓRIA CENTER TABLE ●●

MEMÓRIA IS A CENTER TABLE WITH IRON PIPES AND WOOD, BOTH ON BOTTOM AND TOP.

DESIGNER WEWOOD DESIGN CENTER

#### REFERENCES

**MC.WW002CF** OAK VENEERED  
**MC.WW002NF** WALNUT VENEERED  
**MC.WW003CF** OAK VENEERED  
**MC.WW003NF** WALNUT VENEERED

#### DIMENSIONS

W 1200 H 395 D 1200 || 0.57 M<sup>3</sup>  
W 2000 H 395 D 1200 || 0.95 M<sup>3</sup>

#### PRICE

2990€  
2990€  
3800€  
3800€



### CORNER CENTER / COFFEE TABLE ●●

MARBLE TOP TABLES WITH A STRUCTURE IN SOLID WOOD. AVAILABLE IN ROUND OR RECTANGULAR FORMS AND DIFFERENT TYPES OF WOOD AND MARBLE.

DESIGNER PIERRE DUBOURG

#### REFERENCES

**MC.PD001C** ROUND TABLE OAK STANDARD MARBLE  
**MC.PD001CP** ROUND TABLE OAK PREMIUM MARBLE  
**MC.PD001N** ROUND TABLE WALNUT STANDARD MARBLE  
**MC.PD001NP** ROUND TABLE WALNUT PREMIUM MARBLE

#### DIMENSIONS

Ø 1200 H 400 | 0.57m<sup>3</sup>

#### PRICE

2326€  
2680€  
2742€  
3245€

**MC.PD002C** RECTANGULAR TABLE OAK STANDARD MARBLE  
**MC.PD002CP** RECTANGULAR TABLE OAK PREMIUM MARBLE  
**MC.PD002N** RECTANGULAR TABLE WALNUT STANDARD MARBLE  
**MC.PD002NP** RECTANGULAR WALNUT PREMIUM MARBLE

#### DIMENSIONS

L 1400 D 900 H 400 | 0.50m<sup>3</sup>

2326€  
2680€  
2742€  
3245€

**MC.PD003C** RECTANGULAR TABLE OAK STANDARD MARBLE  
**MC.PD003CP** RECTANGULAR TABLE OAK PREMIUM MARBLE  
**MC.PD003N** RECTANGULAR TABLE WALNUT STANDARD MARBLE  
**MC.PD003NP** RECTANGULAR TABLE WALNUT PREMIUM MARBLE

#### DIMENSIONS

L 1800 D 900 H 400 | 0.72m<sup>3</sup>

3102€  
3550€  
3510€  
3910€



### SIDE BY SIDE SIDE TABLE

SIDE TABLES AVAILABLE IN THREE DIFFERENT SIZES WORK PERFECTLY INDIVIDUALLY OR SIDE BY SIDE. TOP AVAILABLE IN WOOD OR GLASS.

DESIGNER RITA BOTELHO

#### REFERENCES

**MC.RS001V** GLASS SMALL  
**MC.RS001N** WALNUT SMALL  
**MC.RS002V** GLASS MEDIUM  
**MC.RS002N** WALNUT MEDIUM  
**MC.RS003V** GLASS TALL  
**MC.RS003N** WALNUT TALL

#### DIMENSIONS

**TALL**  
Ø 420 H 600 | 0.05m<sup>3</sup>  
**MEDIUM**  
Ø 600 H 500 | 0.18m<sup>3</sup>  
**SMALL**  
Ø 800 H 410 | 0.014m<sup>3</sup>

#### PRICE

1491€  
1491€  
1225€  
1225€  
952€  
952€



### LAGO COFFEE/SIDE TABLE ●

SERIES OF TABLES AVAILABLE IN THREE DIFFERENT SIZES, COMPOSED BY A SOLID MARBLE BASE AND A DELICATE TOP IN WOOD.

DESIGNER CHRISTOPHE DE SOUSA

#### REFERENCES

**MC.CS001C** COFFEE TABLE BLACK OAK STANDARD OR SPECIAL MARBLE  
**MC.CS002C** SIDE TABLE BLACK OAK STANDARD OR SPECIAL MARBLE  
**MC.CS003C** TALL SIDE TABLE BLACK OAK STANDARD OR SPECIAL MARBLE

#### DIMENSIONS

Ø 720 H 340 | 0.18m<sup>3</sup>  
Ø 480 H 450 | 0.10m<sup>3</sup>  
Ø 420 H 550 | 0.10m<sup>3</sup>

#### PRICE

1430€  
1175€  
1285€

## SIDEBOARDS


**CASANOVA** SIDEBOARD

SOLID WOOD SIDEBOARD. THE DETAILS ON THE DOORS ARE IN OAK AND WALNUT. COMPOSED BY TWO CUPBOARDS, TWO DRAWERS AND AN OPEN SPACE WITH ADJUSTABLE SHELF.

DESIGNER WEWOOD DESIGN CENTER

REFERENCE  
**AP.WW303C**

DIMENSIONS  
W 1300 H 740 D 400MM | 0.38m<sup>3</sup>

PRICE  
2289€


**SCARPA** SIDEBOARD

SIDEBOARD IN SOLID WOOD WITH TWO HIDDEN DRAWERS AND FOUR DIVISIONS DIVIDED BY ADJUSTABLE SHELVES. THE DETAILS ON THE DOORS ARE ASSEMBLED BY HAND.

DESIGNER WEWOOD DESIGN CENTER

REFERENCES

**AP.WW201C** OAK  
**AP.WW201TN** WALNUT

DIMENSIONS  
W 1860 H 840 D 450MM | 0.70m<sup>3</sup>

PRICE  
3720€  
4720€


**CAROUSEL** SIDEBOARD

SIDEBOARD WITH SOLID WALNUT FRAME WITH MARBLE TOP AND A TURNTABLE BAR IN THE MIDDLE.

DESIGNER LEONHARD PFEIFER

REFERENCES

**AP.LP401CM** OAK STANDARD MARBLE  
**AP.LP401CMP** OAK PREMIUM MARBLE  
**AP.LP401NM** WALNUT STANDARD MARBLE  
**AP.LP401NMP** WALNUT PREMIUM MARBLE

DIMENSIONS  
W 2050 H 810 D 500 | 0.83m<sup>3</sup>

PRICE  
6995€  
7772€  
7870€  
8744€


**CAROUSEL II** SIDEBOARD

SOLID WOOD SIDEBOARD WITH THREE FOLDING DOORS WITH INTERNAL WOODEN SHELVES AND FOUR DRAWERS WITH TIC-TAC SYSTEM. TOP IN MARBLE.

DESIGNER LEONHARD PFEIFER

REFERENCES

**AP.LP402CM** OAK STANDARD MARBLE  
**AP.LP402CMP** OAK PREMIUM MARBLE  
**AP.LP402NM** WALNUT STANDARD MARBLE  
**AP.LP402NMP** WALNUT PREMIUM MARBLE

DIMENSIONS  
W 2060 H 810 D 500 | 0.83m<sup>3</sup>

PRICE  
4750€  
5278€  
5900€  
6556€


**CAROUSEL III** SIDEBOARD

A SMALLER VERSION OF CAROUSEL II. AVAILABLE IN SOLID WALNUT OR OAK WITH TOP IN MARBLE.

DESIGNER LEONHARD PFEIFER

REFERENCES

**AP.LP403CM** OAK STANDARD MARBLE  
**AP.LP403CMP** OAK PREMIUM MARBLE  
**AP.LP403NM** WALNUT STANDARD MARBLE  
**AP.LP403NMP** WALNUT PREMIUM MARBLE

DIMENSIONS  
W 1594 H 810 D 500 | 0.63m<sup>3</sup>

PRICE  
3985€  
4428€  
4785€  
5317€


**RADIO** SIDEBOARD

TV CABINET IN SOLID WOOD WITH PERFORATED SLIDING DOORS AND HOLES IN THE BACK THAT ALLOWS ITS USE CLOSED KEEPING THE DEVICES HIDDEN.

DESIGNER WEWOOD DESIGN CENTRE

REFERENCES

**AP.WW203C** OAK  
**AP.WW203N** WALNUT

DIMENSIONS  
W 1600 H 470 D 400MM | 0.30m<sup>3</sup>

PRICE  
1758€  
2225€



## SIDEBOARDS



### PANAMÁ SIDEBOARD ●●

SIDEBOARD IN SOLID WOOD, COMBINED WITH MARBLE TOP AND IRON LACQUERED LEGS.

DESIGNER EDE ESTUDIO

#### REFERENCES

**AP.ED401CM** OAK STANDARD MARBLE  
**AP.ED401CMP** OAK PREMIUM MARBLE  
**AP.ED401NM** WALNUT STANDARD MARBLE  
**AP.ED401NMP** WALNUT PREMIUM MARBLE

#### PRICE

4100€  
4544€  
5050€  
5600€

#### DIMENSIONS

W 2200 H 865 D 480 | 0.91m<sup>3</sup>



### PANAMÁ MEDIA UNIT ●●

MEDIA UNIT IN SOLID WOOD, COMBINED WITH MARBLE TOP AND IRON LACQUERED LEGS.

DESIGNER EDE ESTUDIO

#### REFERENCES

**AP.ED301CM** OAK STANDARD MARBLE  
**AP.ED301CMP** OAK PREMIUM MARBLE  
**AP.ED301NM** WALNUT STANDARD MARBLE  
**AP.ED301NMP** WALNUT PREMIUM MARBLE

#### PRICE

3090€  
3411€  
3900€  
4322€

#### DIMENSIONS

W 1900 H 665 D 480 | 0.62m<sup>3</sup>



### GERÊS MEDIA UNIT ●●

MEDIA UNIT IN SOLID WOOD REINFORCED BY FOUR ELEGANT TRIMMED LEGS AND A COLORED SHEET METAL FIXTURE THAT DIVIDES AND SUPPORTS THE FULL LENGTH.

DESIGNER DANIEL VIEIRA

#### REFERENCES

**AP.DV001C** OAK  
**AP.DV001N** WALNUT

#### PRICE

1870€  
2338€

#### DIMENSIONS

W 1850 H 530 D 500 | 0.50m<sup>3</sup>



### MISTER SIDEBOARD

VERSATILE PIECE WITH A STRUCTURE AND DOOR IN SOLID WALNUT. HERRINGBONE PATTERN IN THE DOOR IN SOLID OAK. FULLY ADJUSTABLE INTERIORS THAT CAN BE TURNED INTO A BAR, A DESK OR SIMPLY A SIDEBOARD.

DESIGNER DANIEL DUARTE

#### REFERENCE

**AP.DD101N**

#### PRICE

3780€

#### DIMENSIONS

W 800 H 1230 D 355MM | 0.35m<sup>3</sup>



### CONTADOR SIDEBOARD ●●

SOLID WOOD TIMELESS PIECE THAT PROVIDES A PRACTICAL STORAGE SPACE FOR DINING ROOMS AND OFFICES. IT IS COMPOSED BY DRAWERS OF DIFFERENT DIMENSIONS AND LOWER SHELF.

DESIGNER WEWOOD DESIGN CENTER

#### REFERENCES

**AP.WW304C** OAK  
**AP.WW304N** WALNUT

#### PRICE

3400€  
4300€

#### DIMENSIONS

W 840 H 1460 D 300MM | 0.37m<sup>3</sup>



### TOUCH SIDEBOARD ●●

SIDEBOARD WITH EXTERIOR IN SOLID WOOD AND INTERIOR IN NATURAL VENEERED MDF. BASE MADE OF IRON WITH MATTE ELECTROSTATIC PAINT.

DESIGNER SURICATA DESIGN STUDIO

#### REFERENCES

**AP.SD101C** OAK  
**AP.SD101N** WALNUT

#### PRICE

4990€  
6695€

#### DIMENSIONS

W 545 H 1475 D 545MM | 0.44m<sup>3</sup>







# CONTRACT COLLECTION

WE ARE STARTING A SMALL CONTRACT COLLECTION OF FURNITURE DESIGNED  
FOR RESTAURANTS, HOTELS AND PUBLIC SPACES,  
THAT INCORPORATES WEWOOD'S LOOK AND FEEL

## CONTRACT



### COUNTRY CHAIR ●●

SOLID WOOD CHAIR IS IDEAL TO RESTAURANTS, BAR OR LOCAL ACCOMODATIONS.

DESIGNER TOM KELLEY

#### REFERENCES

**CD.TK004C** OAK  
**CD.TK004N** WALNUT

#### DIMENSIONS

W 420 H 800 D 480 | 0.17m<sup>3</sup>

#### PRICE

365€  
540€



### COUNTRY BAR STOOL ●●

SOLID WOOD BAR STOOL IDEAL FOR ANY BAR. AVAILABLE IN OAK OR WALNUT.

DESIGNER TOM KELLEY

#### REFERENCES

**CD.TK005C** OAK  
**CD.TK005N** WALNUT

#### DIMENSIONS

W 405 H 1020 D 490MM | 0.20m<sup>3</sup>

#### PRICE

450€  
590€



### COUNTRY LOUNGE CHAIR ●●

COMFORTABLE AND OPULENT RELAXING CHAIR. FABRIC AND LEATHER CAN BE CUSTOMIZED ACCORDING TO THE NEEDS OF EACH PROJECT.

DESIGNER TOM KELLEY

#### REFERENCES

**CD.TK006C** OAK CLASSIC FABRIC  
**CD.TK006CP** OAK PREMIUM FABRIC  
**CD.TK006CTC** OAK CLIENT FABRIC  
**CD.TK006N** WALNUT CLASSIC FABRIC  
**CD.TK006NP** WALNUT PREMIUM FABRIC  
**CD.TK006NTC** WALNUT CLIENT FABRIC

#### DIMENSIONS

W 620 H 760 D 590 | 0.28m<sup>3</sup>

#### PRICE

670€  
745€  
570€  
775€  
850€  
675€



### ERICEIRA CHAIR ●●

ELEGANT AND COMFORTABLE CHAIR CREATED WITH THE LOCAL ACCOMMODATION IN MIND. AVAILABLE IN OAK OR WALNUT

DESIGNER BRUNO MARQUES

#### REFERENCES

**CD.BM001C** OAK  
**CD.BM001N** WALNUT

#### DIMENSIONS

W 470 H 854 D 800 | 0.2m<sup>3</sup>

#### PRICE

334€  
500€



### CODFISH CHAIR ●●

WOOD CHAIR THAT REINVENTS THE CLASSIC SHAPE OF CHAIRS. AVAILABLE IN OAK OR WALNUT AND IN SEVERAL COLOR FINISHING.

DESIGNER WEWOOD DESIGN CENTRE

#### REFERENCES

**CD.WW001C** OAK  
**CD.WW001N** WALNUT

#### DIMENSIONS

W 445 H 905 D 525MM | 0.21m<sup>3</sup>

#### PRICE

390€  
495€

## CONTRACT


**CASINO SOFA**

WITH A CURVED FORM WITH MEMORY FOAM AND DURABLE FABRICS SUPPORTED BY A METAL STRUCTURE AND LEGS, THIS IS A PERFECT SOFA FOR HOTELS OR BARS.

DESIGNER WEWOOD DESIGN CENTER

REFERENCE  
**SF.WW001**

DIMENSIONS  
W 2400 H 1700 D 790MM | 3.22 m<sup>3</sup>

PRICE  
6910€


**BISTRÔ CURVED TABLE**

BISTRÔ CURVED TABLE CONFIGURATION ALLOWS THE ECONOMY OF SPACE AND MORE COMFORT.

DESIGNER WEWOOD DESIGN CENTRE

REFERENCE  
**MJ.WW007N**

DIMENSIONS  
W 800 H 752 D 800MM | 0.75 m<sup>3</sup>

PRICE  
530€


**BISTRÔ DINING TABLE**

BISTRÔ IS A SIMPLE AND USEFUL TABLE WITH A CENTRAL IRON LEG. AVAILABLE IN SQUARE OR ROUND TOP IN VENEERED OAK OR WALNUT.

DESIGNER WEWOOD DESIGN CENTRE

REFERENCES

**MJ.WW003C** ROUND OAK  
**MJ.WW003N** ROUND WALNUT  
**MJ.WW004C** SQUARE OAK  
**MJ.WW004N** SQUARE WALNUT

DIMENSIONS  
W 700 H 760 D 700MM | 0.37 m<sup>3</sup>  
Ø 700 H 760 | 0.37 m<sup>3</sup>

PRICE  
509€  
549€  
509€  
549€


**NUDA DINING TABLE**

LINEAR AND CLEANED SHAPES FOR THIS SOLID WOOD TABLE, AVAILABLE IN SOLID OAK OR WALNUT AND WITH MARBLE TOP.

DESIGNER GONÇALO CAMPOS

REFERENCES

**MJ.GC005C** OAK RECTANGULAR  
W 1800 H 750 D 900 | 1.22 m<sup>3</sup>  
**MJ.GC005N** WALNUT RECTANGULAR  
W 1800 H 750 D 900 | 1.22 m<sup>3</sup>  
**MJ.GC006C** OAK RECTANGULAR  
W 2000 H 750 D 1000 | 1.5 m<sup>3</sup>  
**MJ.GC006N** WALNUT RECTANGULAR  
W 2000 H 750 D 1000 | 1.5 m<sup>3</sup>

PRICE  
1529€  
1835€  
1645€  
1970€


**NUDA LOW**

HIGH TABLE WITH LINEAR AND CLEAN SHAPES IN SOLID WOOD, DESIGNED FOR CONTRACT LINES. AVAILABLE IN SOLID OAK OR WALNUT AND WITH MARBLE TOP.

DESIGNER GONÇALO CAMPOS

REFERENCES

**MJ.GC007C** OAK SQUARE  
W 700 H 750 D 700 | 0.36 m<sup>3</sup>  
**MJ.GC007N** WALNUT SQUARE  
W 700 H 750 D 700 | 0.36 m<sup>3</sup>  
**MJ.GC008C** OAK SQUARE  
W 800 H 750 D 800 | 0.48 m<sup>3</sup>  
**MJ.GC008N** WALNUT SQUARE  
W 800 H 750 D 800 | 0.48 m<sup>3</sup>  
**MJ.GC009C** OAK SQUARE STANDARD MARBLE\*  
W 700 H 750 D 700 | 0.36 m<sup>3</sup>  
**MJ.GC009N** WALNUT SQUARE STANDARD MARBLE\*  
W 700 H 750 D 700 | 0.36 m<sup>3</sup>  
**MJ.GC010C** OAK SQUARE STANDARD MARBLE\*  
W 800 H 750 D 800 | 0.48 m<sup>3</sup>  
**MJ.GC010N** WALNUT SQUARE STANDARD MARBLE\*  
W 800 H 750 D 800 | 0.48 m<sup>3</sup>

PRICE  
825€  
990€  
902€  
1082€  
1474€  
1769€  
1584€  
1901€


**NUDA HIGH**

HIGH TABLE WITH LINEAR AND CLEAN SHAPES IN SOLID WOOD, DESIGNED FOR CONTRACT LINES. AVAILABLE IN SOLID OAK OR WALNUT AND WITH MARBLE TOP.

DESIGNER GONÇALO CAMPOS

REFERENCES

**MJ.GC011C** OAK HIGH SQUARE  
W 700 H 1095 D 700 | 0.54 m<sup>3</sup>  
**MJ.GC011N** WALNUT HIGH SQUARE  
W 700 H 1095 D 700 | 0.54 m<sup>3</sup>  
**MJ.GC012C** OAK HIGH SQUARE  
W 800 H 1095 D 800 | 0.70 m<sup>3</sup>  
**MJ.GC012N** WALNUT HIGH SQUARE  
W 800 H 1095 D 800 | 0.70 m<sup>3</sup>  
**MJ.GC013C** OAK HIGH SQUARE STANDARD MARBLE\*  
W 700 H 1100 D 700 | 0.54 m<sup>3</sup>  
**MJ.GC013N** WALNUT HIGH SQUARE STANDARD MARBLE\*  
W 700 H 1100 D 700 | 0.54 m<sup>3</sup>  
**MJ.GC014C** OAK HIGH SQUARE STANDARD MARBLE\*  
W 800 H 1100 D 800 | 0.70 m<sup>3</sup>  
**MJ.GC014N** WALNUT HIGH SQUARE. STANDARD MARBLE\*  
W 800 H 1100 D 800 | 0.70 m<sup>3</sup>

PRICE  
963€  
1155€  
1034€  
1241€  
1584€  
1901€  
1639€  
1967€

## CONTRACT



### GAZETA MAGAZINE HOLDER

SOLID WOOD BLOCK WITH A DRAWER AND A SUPPORT PIECE IN METAL AND LEATHER TO HOLD MAGAZINES AND PERIODICALS.  
DESIGNER WEWOOD DESIGN CENTER

REFERENCE  
**Z**

DIMENSIONS  
W 550 H 450 D 400MM | 0.09 m<sup>3</sup>

PRICE  
800€



### HIDE & SEEK MIRROR ●●

FREESTANDING RECTANGULAR MIRROR, WITH A SOLID WOOD FRAME AND A POWDED COATED STEEL STRUCTURE, DESIGNED TO INTEGRATE NEW FEATURES.  
DESIGNER TOM KELLEY

REFERENCES  
**ED.TK001C** OAK  
**ED.TK001N** WALNUT

DIMENSIONS  
W 497 H 1835 D 550MM | 0.50m<sup>3</sup>

PRICE  
1280€  
1480€



### LUGGAGE HOTEL CART

LUGGAGE HOTEL CART MADE FROM METAL AND WALNUT WITH A BACK ON CANE. THE FOUR WHEELS ASSURE STABILITY AND THE STRUCTURE CAN ALSO BE USED AS A COAT HANGER.  
DESIGNER WEWOOD DESIGN CENTRE

REFERENCE  
**CM.WW001**

DIMENSIONS  
W 1025 H 1800 D 625MM | 1.15m<sup>3</sup>

PRICE  
1980€

**COLORS, MATERIALS  
AND FINISHES**

## WOOD OPTIONS

---

### NATURAL WOOD

---



MPT NATURAL OAK



MPT NATURAL WALNUT

### OAK OPEN PORE OPTIONS

---



MPT OAK WHITE OPEN PORE



MPT OAK BLACK OPEN PORE



MPT OAK ANTRACITE OPEN PORE



MPT OAK CHESTNUT OPEN PORE



## MARBLE OPTIONS

---

### STANDARD MARBLE

---



ESTREMOZ



NERO MARQUINA

### PREMIUM MARBLE

---



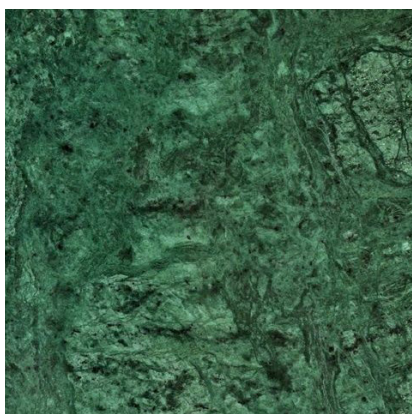
CALACATTA



EMPERADOR

### SPECIAL MARBLE

---



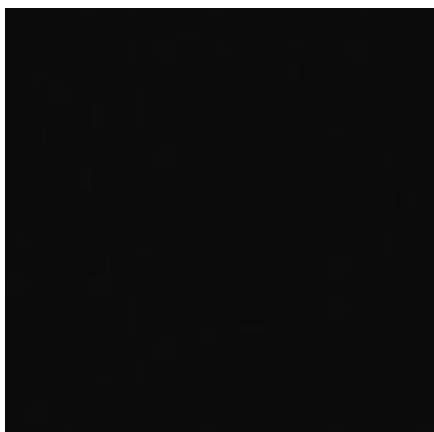
GUATEMALA GREEN\*

## METAL OPTIONS

---

### IRON

---



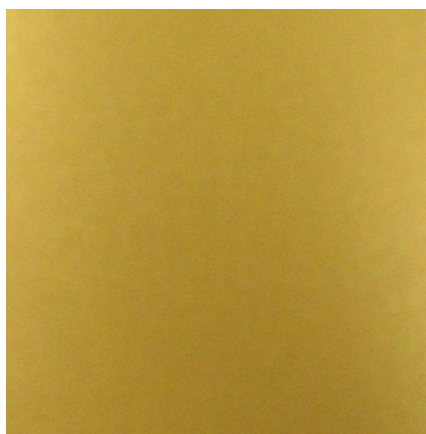
BLACK POLISHED

### BRASS

---



GOLDEN BRUSHED



GOLDEN POLISHED

## LEATHER OPTIONS

---

### PRESCOTT

COMPOSITION: 100% LEATHER | MARTINDALE: 85 000 | FR: NO



PL002 POPYRUS



PL004 COTTO



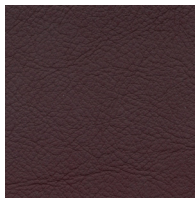
PL006 BLACK INK



PL007 ANTIQUE



PL008 BIRCH



PL009 RIBES

### CLASSIC

COMPOSITION: 100% LEATHER | MARTINDALE: 85 000 | FR: NO



PL001 PERLA



PL003 CHESTNUT



PL005 NERO

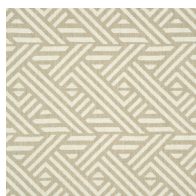


## PREMIUM OPTIONS

---

### PAMPAS

**COMPOSITION:** 52% VISCOSE; 25% COTTON; 14% LINEN; 6% ACRYLIC; 4% NYLON | **MARTINDALE:** 40 000 | **FR:** YES



PP001 SATIN



PP002 S YELLOW



PP003 SUNSET



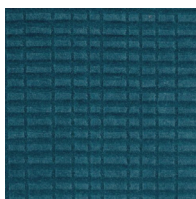
PP004 TEAL



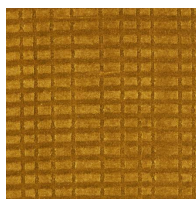
PP005 CARBON

### BLOCK

**COMPOSITION:** 97% COTTON; 3% POLYESTER | **MARTINDALE:** 40 000 | **FR:** NO



PP102 TEAL



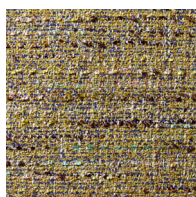
PP103 OCHRE



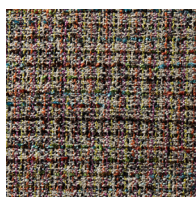
PP104 CREAM C

### SALONE

**COMPOSITION:** 40% ACRYLIC; 40% COTTON; 10% VISCOSE; 10% POLYESTER | **MARTINDALE:** 85 000 | **FR:** NO



PP201 CORN



PP202 TALIS



PP203 PACIFIC



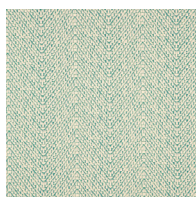
PP204 PUTTY



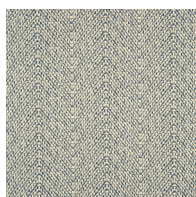
PP205 PECAN

### SALTA

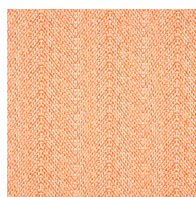
**COMPOSITION:** 52% VISCOSE; 25% COTTON; 14% LINEN; 6% ACRYLIC; 4% NYLON | **MARTINDALE:** 30 000 | **FR:** YES



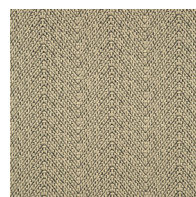
PP301 SPRUCE



PP302 INK



PP303 HENNA



PP304 NOIR

## CLASSIC OPTIONS

---

### ALLURE

COMPOSITION: 100% POLYESTER | MARTINDALE: 70 000 | FR: YES



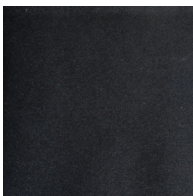
CV001 NAVY

CV002 EMERALD

CV003 LEMON

CV004 CINNAMON

CV005 CREAM



CV006 BLACK

### NABUCO

COMPOSITION: 57% COTTON; 38% VISCOSE; 5% POLYAMIDE | MARTINDALE: 50 000 | FR: YES



CF001 PARCHMENT

CF002 T PINK

CF003 R GREEN

CF004 BLACK F

CF005 DN BLUE



CF006 DARK GREY

## DERBY

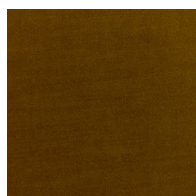
COMPOSITION: 100% POLYESTER | MARTINDALE: 50 000 | FR: NO



CV101 BLACK



CV102 CREAM



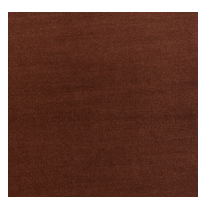
CV103 SPICE



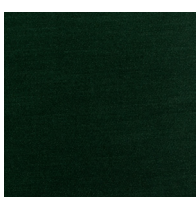
CV104 DESERT



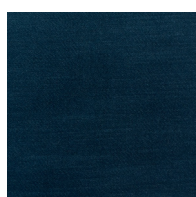
CV105 MOSTAZA



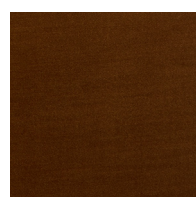
CV106 APRICOT



CV107 MALLARD



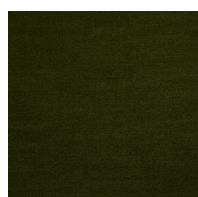
CV108 DARK BLUE



CV109 BRICK



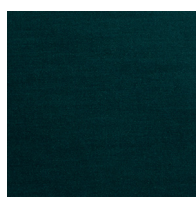
CV110 B COPPER



CV111 CACTUS



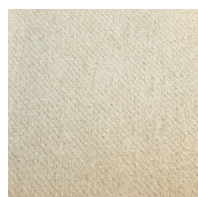
CV112 LAUREL



CV113 PETROL

## CONWAY

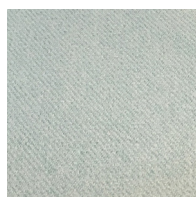
COMPOSITION: 100% POLYESTER | MARTINDALE: 40 000 | FR: YES



CC001 BUTTERMILK



CC002 REGENCY



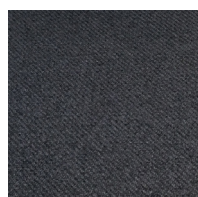
CC003 SEASPRAY



CC004 LINEN



CC005 LEMON

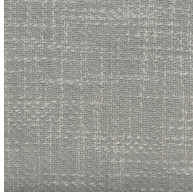


CC006 SLATE



## HUDSON

COMPOSITION: 100% POLYESTER | MARTINDALE: 40 000 | FR: YES



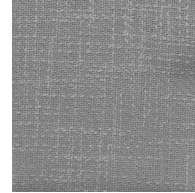
CL001 PEBBLE



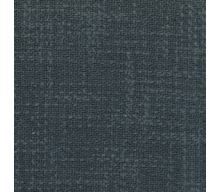
CL002 BLACK



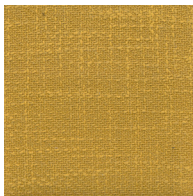
CL003 BASALT



CL004 LAGGON



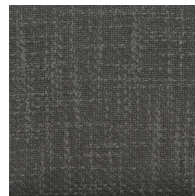
CL005 MIDNIGHT



CL006 CANARY



CL007 HONEY



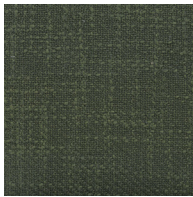
CL008 ASH



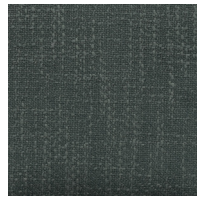
CL009 PORT



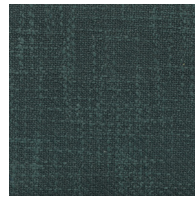
CL010 OYSTER



CL011 MOSS



CL012 SMOKE BLUE



CL013 NIGHT

## GENERAL TERMS AND CONDITIONS

BY ORDERING WEWOOD PRODUCTS YOU ARE AGREEING TO ABIDE BY THESE TERMS AND CONDITIONS:

EACH STATED PRICE CORRESPONDS TO A SINGLE PIECE;

VAT IS NOT INCLUDED IN THE PRICE, THIS LEGAL TAX MUST BE ADDED TO THE PRICE;

THE PRICE INCLUDES TRANSPORTATION FOR SOME COUNTRIES AND FROM A MINIMUM AMOUNT. FOR MORE INFORMATION PLEASE GET IN TOUCH WITH OUR SALES DEPARTMENT;

IF THE CLIENT CHOOSES TO TRANSPORT THE PRODUCT(S) BY HIS OWN METHOD, WEWOOD WILL BE FREE OF ANY RESPONSABILITY DUE TO THE TRANSPORTATION.

## PAYMENT CONDITIONS

WEWOOD STARTS THE PRODUCTION AFTER CONFIRMING RECEIVING THE TOTAL AMOUNT OR 50% OF IT. THE LEAD TIME STARTS COUNTING AFTER THIS DAY;

ALL PIECES ARE WEWOOD'S PROPERTY UNTIL THE PAYMENT IS 100% RECEIVED AND CONFIRMED.

## PAYMENT DETAILS

### ORDERS ADDRESS

MPT - MARCENARIA PORTUGUESA LDA  
RUA D. AFONSO HENRIQUES Nº 77 P.O BOX 10  
4589-907 REBORDOSA - PORTUGAL

### ACCOUNT NAME

MPT - MARCENARIA PORTUGUESA LDA

### IBAN

PT 5000 100 000 4353 0220 0011 4 BIC/SWIFT BBPIPTPL

PT 5000 330 000 4551 5513 1190 5 BIC/SWIFT BCOMPTPL

## PACKING AND SHIPPING

ALL ORDERS ARE SHIPED IN A TRIPLE WALL CARD BOX TAILOR MADE FOR EACH PIECE OF FURNITURE.

BEFORE PACKING, ALL THE PIECES ARE PROTECTED BY POLYETHYLENE FOAM.

IF YOU WISH A PREMIUM PACKING FOR YOUR ORDER (PLYWOOD BOX), PLEASE CONTACT OUR SALES DEPARTMENT, BEFORE PLACING YOUR ORDER.

## COMPLAINTS

THE PHYSICAL PRODUCT MUST BE INSPECTED UPON DELIVERY. DAMAGE INCURRED IN TRANSIT AS WELL AS ANY DEFECTS AND DEFICIENCIES ON THE PRODUCT INCURRED AS A RESULT OF TRANSPORTATION MUST BE RECORDED ON THE FREIGHT BILL UPON DELIVERY.

ANY VISIBLE DAMAGE TO THE PACKAGING OR SHORTAGES MUST BE NOTED ON THE DELIVERY NOTE ON RECEIPT AND SUBSEQUENTLY BE REPORTED IN WRITING TO WEWOOD. FOR NON-VISIBLE DAMAGE, THE BUYER MUST NOTE ON THE DELIVERY NOTE ON RECEIPT "SUBJECT TO VERIFICATION". NON-VISIBLE DAMAGE MUST BE REPORTED IN WRITING IMMEDIATELY UPON DISCOVERY AND WITHIN SEVEN DAYS OF RECEIPT AT THE LATEST. EVEN THOUGH THE BUYER INTENDS TO PLACE THE GOODS IN STOCK, THE BUYER IS OBLIGED TO CHECK THE GOODS FOR VISIBLE DEFECTS AND REPORT ANY VISIBLE DAMAGE WITHIN SEVEN DAYS OF RECEIPT OF THE GOODS AT THE LATEST.

WEWOOD UNDERTAKES TO REMEDY ALL DEFECTS AND DEFICIENCIES WHICH ARE DUE TO PRODUCTION BY EITHER REPAIRING OR EXCHANGING THE GOODS IF SUCH DEFECTS BECOME APPARENT WITHIN ONE YEAR OF THE DATE OF DELIVERY TO THE BUYER. SMALL KNOTS, STRIPES, COLOUR DIFFERENCES, MARKED AND FAINT RINGS OF WOOD GRAINS ARE SIGNS OF GENUINENESS AND ARE NOT REGARDED AS DEFECTS OR DEFICIENCIES. INAPPROPRIATE USE AND THE LIKE ARE NOT COVERED BY THE RIGHT TO COMPLAIN. IF THE BUYER IS INFORMED ABOUT DEFECTS AND DEFICIENCIES, THE BUYER MUST IMMEDIATELY NOTIFY WEWOOD IN WRITING ABOUT THE COMPLAINT.

COMPLAINTS MUST BE MADE IN WRITING AND SENT TO THE E-MAIL [INFO@WEWOOD.EU](mailto:INFO@WEWOOD.EU) AND MUST INCLUDE A DETAILED DESCRIPTION OF THE DEFECT/DEFICIENCY WITH ACCOMPANYING PHOTOS. WEWOOD WILL ASSESS EACH INDIVIDUAL COMPLAINT AND MAY REQUEST FOR THIS PURPOSE THAT THE PRODUCT MUST BE RETURNED FOR ASSESSMENT FOR THE BUYER'S OWN ACCOUNT. IF THE COMPLAINT IS JUSTIFIED, THE DEFECT OR DEFICIENCY WILL BE REPAIRED OR THE PRODUCT EXCHANGED.

FAILURE TO COMPLY WITH THESE REQUIREMENTS MEANS THAT THE RIGHT TO COMPLAIN WILL BE FORFEITED. THE BUYER BEARS THE RISK FOR THE GOODS BEING STORED UNDER NORMAL STORAGE CONDITIONS FOR FURNITURE AND FOR THE CONDITION OF THE GOODS DURING STORAGE.

## CURRENCY AND EFFECTIVE DATE

THIS PRICE LIST IS VALID FROM 15.10.2020 AND CANCELS ALL PRIOR PRICE LISTS.





ALL PRICES ARE IN EURO EXCL. VAT.



# WEWOOD

PORTUGUESE JOINERY

## DAILY INSPIRATION

-  /wewoodportuguesejoinery
-  /wewoodportuguesejoinery
-  /wewoodportuguesejoinery
-  /company/wewoodportuguesejoinery

**[www.wewood.eu](http://www.wewood.eu)**  
**[info@wewood.eu](mailto:info@wewood.eu)**  
**#wewoodportuguesejoinery**

Rua D. Afonso Henriques, 77  
4585 - 322 Gandra - Portugal

GPS N41°10'21.44" W8°26'20.07"

T. +351 224 114 050  
M. +351 932 492 434